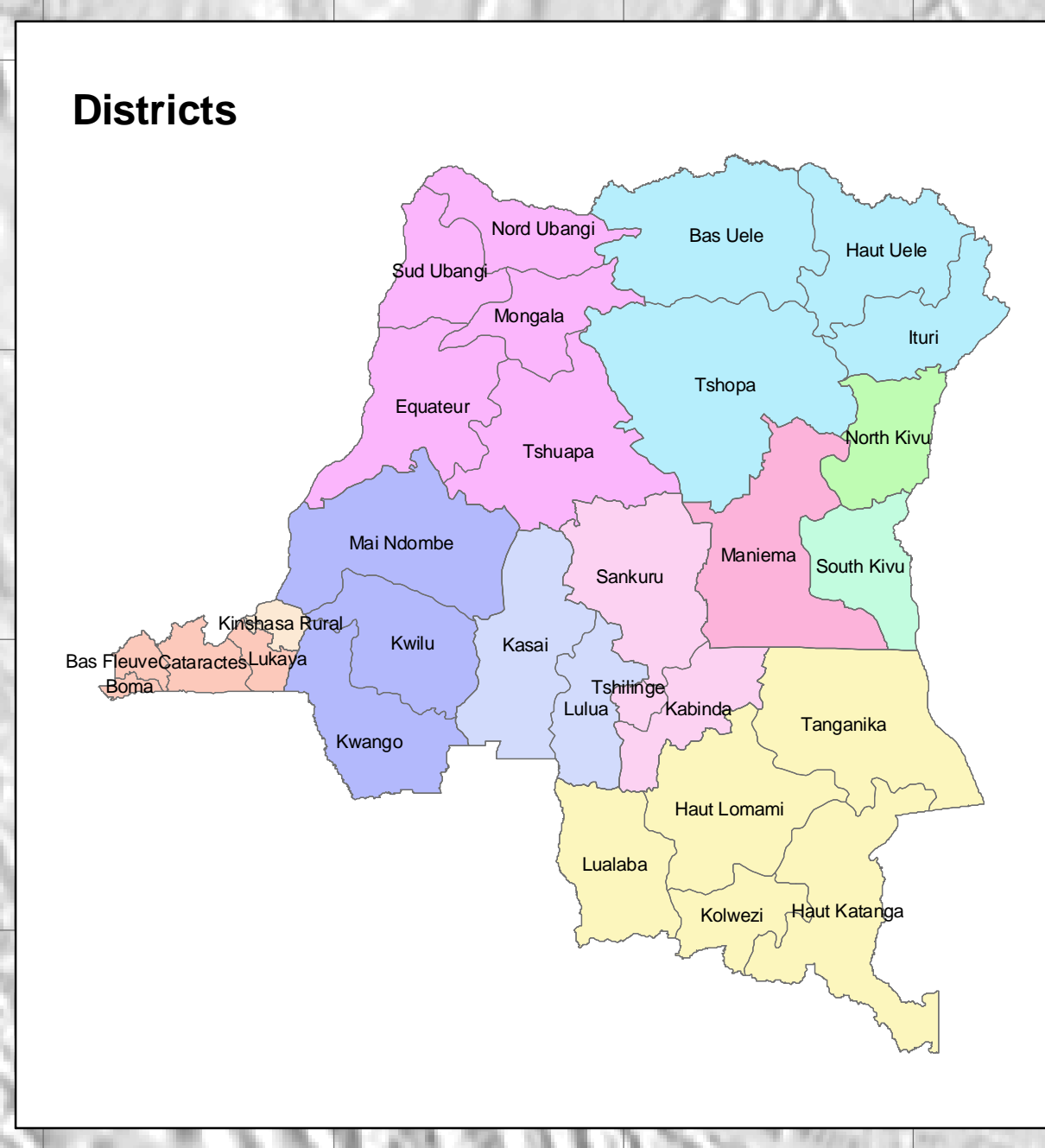
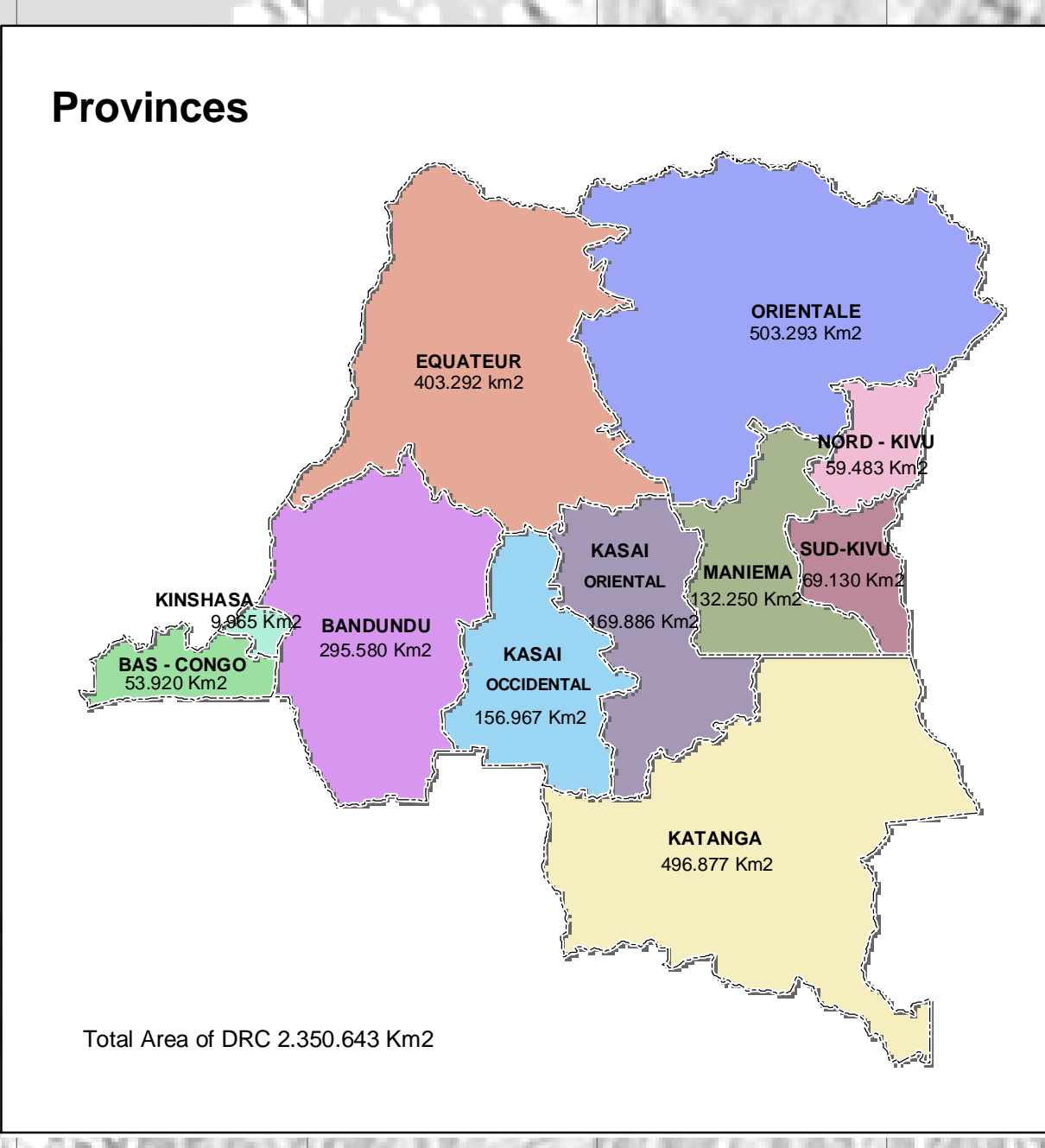
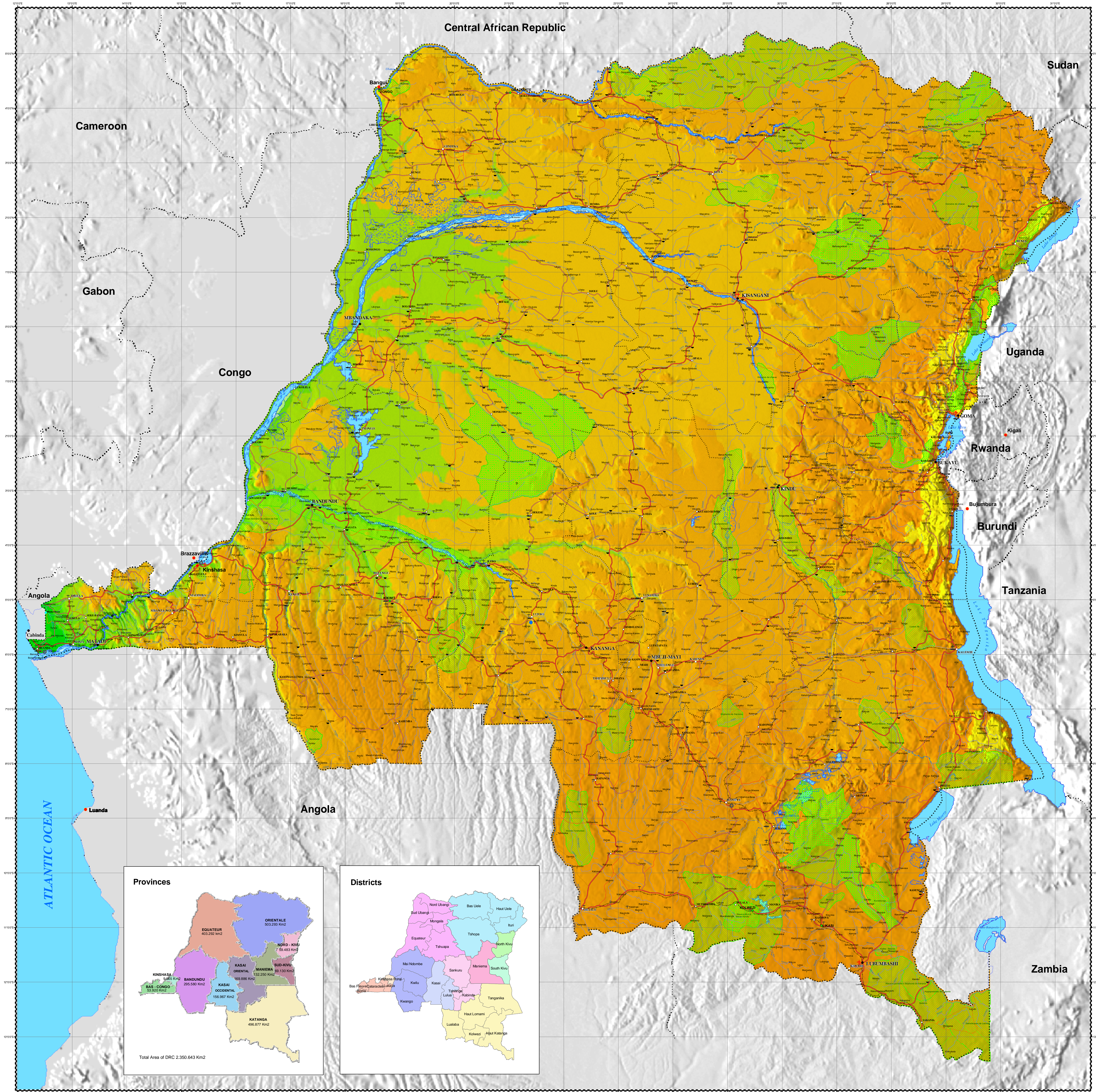


GENERAL MAP DEMOCRATIC REPUBLIC OF CONGO

Map No. GL 101 Shaded
GIS UNIT, MONUC

DEMOCRATIC REPUBLIC OF CONGO

AFRICA



LEGEND

● Capital Cities	— National road
○ Province Headquarter	— Regional primary road
○ District Headquarter	— Regional secondary road
○ Territory Headquarter	— Local road
● Main city	— Railway
● Important Locality	— Hydrography
● Secondary Locality	— Swamp
● Navigation terminal	— Navigable Stream
✈ Aerodrome	— Non Navigable River
✈ Military aerodrome	— Non Navigable Stream
✈ National airport	— Rapid Line
✈ International airport	— Province Boundary
⚓ Ferry Boat	— Country Boundaries
⚓ Ports	— Parks
⚓ Maritime Port	— Hunting Domain
⚓ Principal Port	— National park
⚓ Secondary Port	— Faunal Reserve

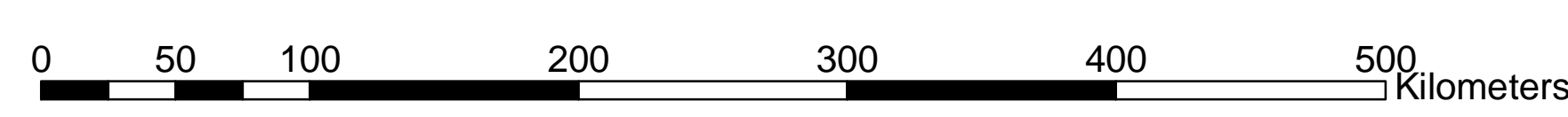
GENERAL MAP OF THE REPUBLIC DEMOCRATIC OF CONGO

Source Data:
- Carte Générale de la Rép. Dém. du Congo, IGN & IGC, 1988.
- Répertoire des provinces et des districts administratifs, Ministère de l'Intérieur, DRC, Kinshasa, 1998.
- Tableau synthétique des Localités en DRC, IGC, 1980.
- IGN/MI, IGN, Kinshasa, 1980.

Updated and compiled by MONUC GIS Unit, Kinshasa.



1:2,500,000



UNITED NATIONS
MONUC - DPKO
GIS UNIT

Date: 11 January 2004